



**Yogiron**  
HOMOGENEOUS FLOORING

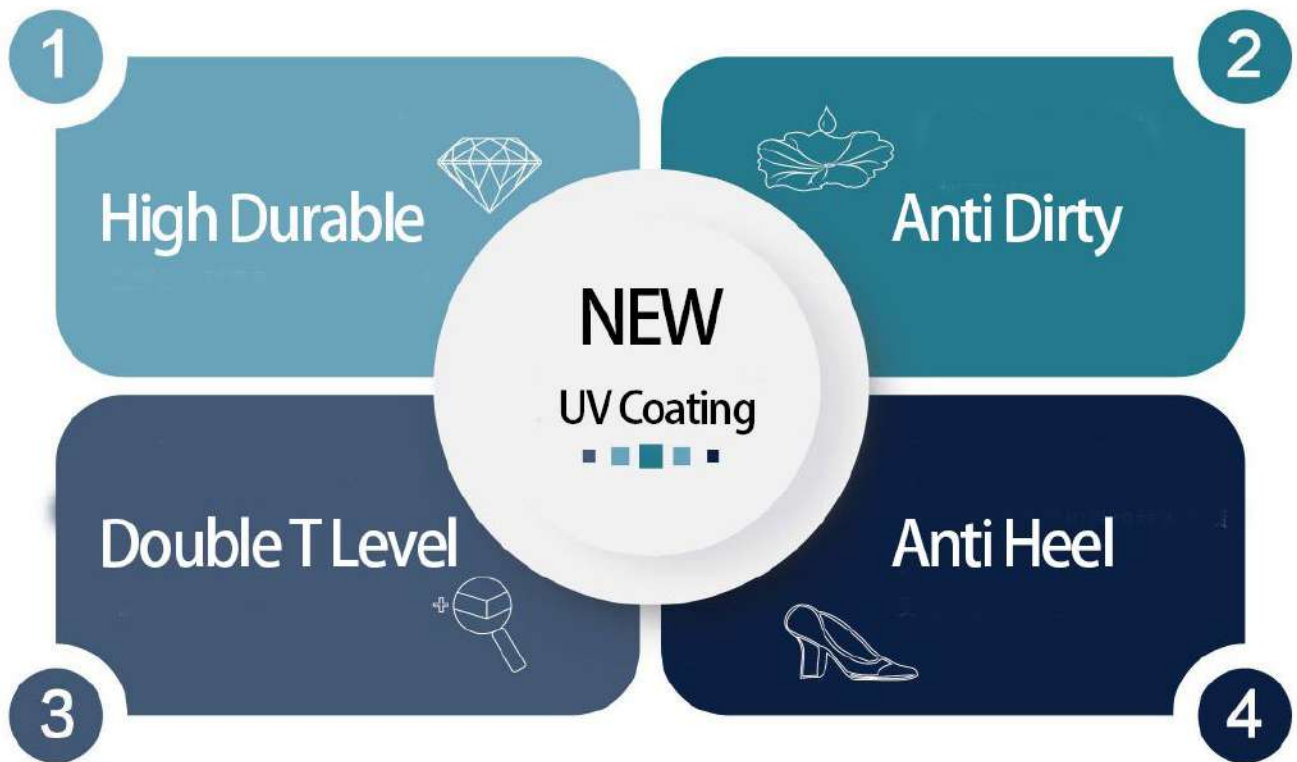


*Discover a new world of colour*



# Yogiron

New UV coating system for comprehensive care







© Y822A-306 Porcelain



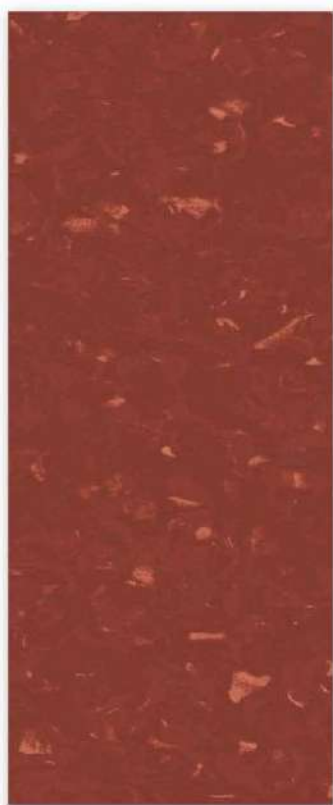
© Y822A-307 Beige



© Y822A-022 Khaki grey



© Y822A-015 Hazelnut



© Y822A-416 Wine



© Y822A-614 Cobalt



© Y822A-119 Vanilla



© Y822A-120 Espresso

 Dimension: 2.0mmx2.0m x 20m



© Y822A-602 Cerulean



© Y822A-601 Arctic



© Y822A-502 Emerald



© Y822A-501 Peacock



© Y822A-101 Pebble



© Y822A-201 Egg Shell



© Y822A-001 Flint



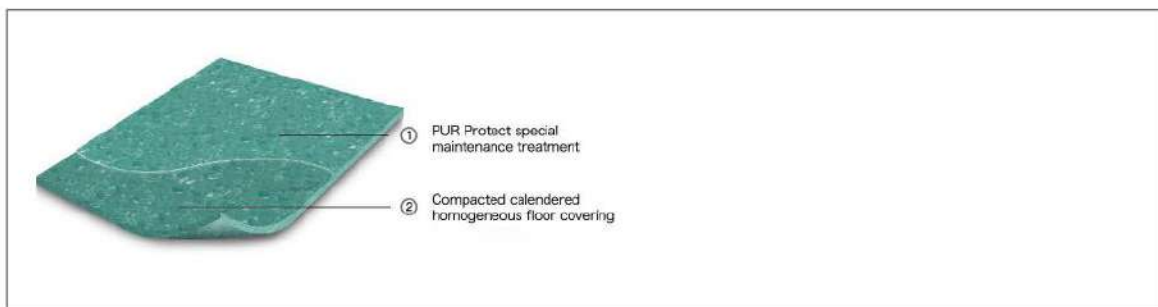
© Y822A-002 Anchor





## Technical specifications

	Binder content	EN ISO 10581	type 1
	Total thickness	EN ISO 24346	2.0 mm
	Collection size		16
	Commercial use	EN ISO 10874	34 very heavy
	Light industrial use	EN ISO 10874	43 heavy
	Roll width	EN ISO 24341	2 m
	Roll length	EN ISO 24341	20m
	Total weight	EN ISO 23997	3.2 kg/m <sup>2</sup>
	Dimensional stability	EN ISO 23999	≤ 0.2 %
	Residual indentation <i>Typical value</i>	EN ISO 24343-1	≤ 0.10 mm -0.03 mm
	Castor chair continuous use	ISO 4918 / EN 425	pass
	Light fastness	ISO 105-B02	≥ 7
	Flexibility	EN ISO 24344	Ø 10 mm
	Resistance to chemicals	EN ISO 26987	very good
	Slip resistance	DIN 51130	R9
	Wetroom application	EN 13553	yes
	Bacteria resistance	EN 846	Does not support growth
	Indoor Air Emissions: TVOC after 28 days	ISO 16516	≤ 0.01 mg/m <sup>3</sup>
	Life Cycle Assessment	LCA is the foundation for securing the lowest environmental impact	
	<b>Creating better environments</b>		
	Reaction to fire	EN 13501-1	B <sub>s</sub> s1, L, NCS
	Slip resistance	EN 13893	μ ≥ 0.30
	Body voltage	EN 1815	≤ 2 kV
	Thermal conductivity	EN 12524	0.25 W/m-K



Discover a new world of colour